

# FILL-RITE®

The Most Trusted Name in Pumps and Meters

## HOSE ACCESSORIES



How do you improve the best pumps and meters in the industry? By adding the best accessories in the industry! Designed to maximize safety and convenience, these accessories provide the final touch to your professional grade fuel transfer system.

**Fill-Rite Dual Plane Swivels** provide flexibility when fueling by allowing the nozzle to swivel and rotate. Improved safety comes from less stress on the nozzle and hose, allowing for more natural positioning of the nozzle.

**Fill-Rite Break-Away Valves** offer protection from accidental drive-away situations where the nozzle stays inserted in the vehicle. Quick break-away and a fast closing, positive sealing valve stop the flow of fuel in these emergency situations. These valves are offered in two of sizes to accommodate different applications.

**Fill-Rite Whip Hoses** provide proper extension positioning of the Fill-Rite Break-Away Valve for optimum protection of the pumping platform. Also available in two sizes, the whip hoses ensure your safety devices are prepared for any situation that may arise.

There's no substitute for safety. Complete your system with professional grade accessories from Fill-Rite.



## FEATURES

- **NPT Threads**
- **Gasoline, Diesel, E15 and Biodiesel up to B20**
- **3/4" and 1" Options**
- **One-Year Warranty**
- **UL/cUL Listed**
- **Compatible with Fill-Rite Products**

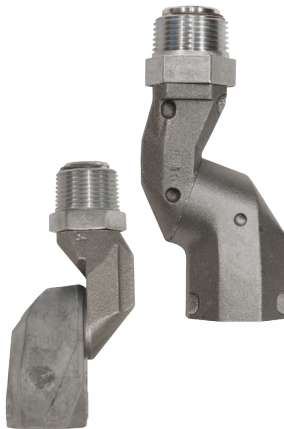
PROUDLY  
Made in  
USA



### Breakaway

- Instant closing poppet check valve
- Lightweight

|                   | <b>B075F350</b>                               | <b>B100F475</b> |
|-------------------|---|-----------------|
| Inlet/Outlet      | 3/4"  | 1"              |
| Min. Temperature  | -40° F/C                                      |                 |
| Separation Rate   | Less than 300 lbf / 1,334.4 N                 |                 |
| Certification     | UL / cUL                                      |                 |
| Compatible Fluids | Gasoline, Diesel, E15 and Biodiesel up to B20 |                 |



### Multi-Plane Swivel

- Full 360° Spherical Rotation
- Double O-Ring Seals

|                   | <b>S075H1314</b>                              | <b>S100H1315</b> |
|-------------------|---|------------------|
| Inlet/Outlet      | 3/4"  | 1"               |
| Min. Temperature  | -40° F/C                                      |                  |
| Certification     | UL / cUL                                      |                  |
| Compatible Fluids | Gasoline, Diesel, E15 and Biodiesel up to B20 |                  |



### Whip Hose

- Highly resistant to cuts, abrasions, sun and weather

|                     | <b>WH07509</b>                                | <b>WH10012</b> |
|---------------------|---|----------------|
| Inlet/Outlet Length | 3/4" x 9"                                     | 1" x 12"       |
| Min. Temperature    | -40° F/C                                      |                |
| Certification       | UL / cUL                                      |                |
| Compatible Fluids   | Gasoline, Diesel, E15 and Biodiesel up to B20 |                |

